

Krause Imposition Manager

The Imposition Solution for flexible Job Handling



KIM 7

- KIM | Standard
- KIM | Small Format
- KIM | Digital
- KIM | Auto
- KIM | Auto Small Format
- KIM | News

KIM Sheet Optimisation

- PerfectPlan
- AUTOsPrint

Certified CIP4 / JDF-Support



- Digital imposition and flexible sheet assembly for webfed, sheetfed and digital printing
- Combined sheets of bound and unbound products
- JDF import and export – CIP4 certified
- Interfaces to MIS and workflow systems of well-known manufacturers
- Barcode creation for printsheet identification
- Far-reaching automation by use of production profiles
- Integrated sheet optimisation for label and Web2Print with KIM PerfectPlan and AUTOsPrint solution

KRAUSE

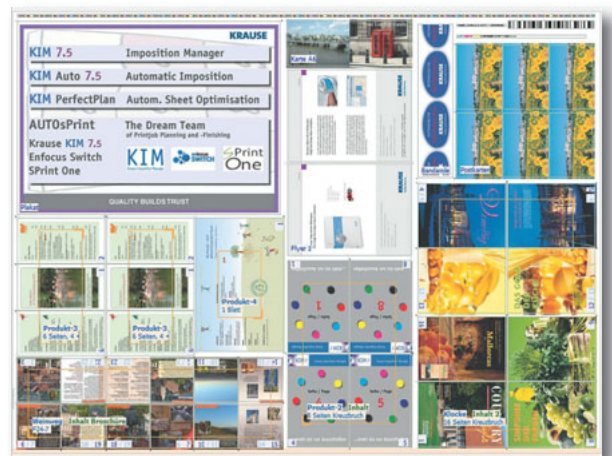
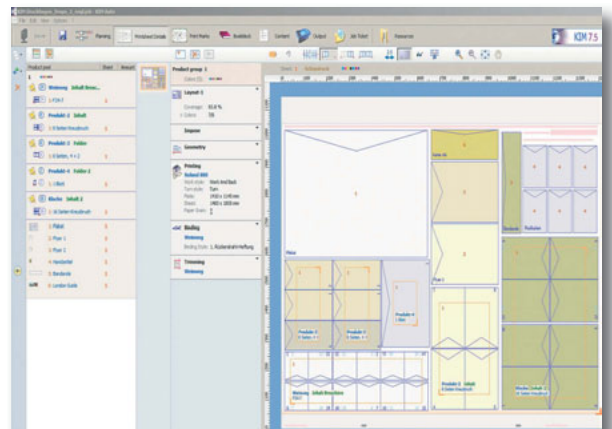
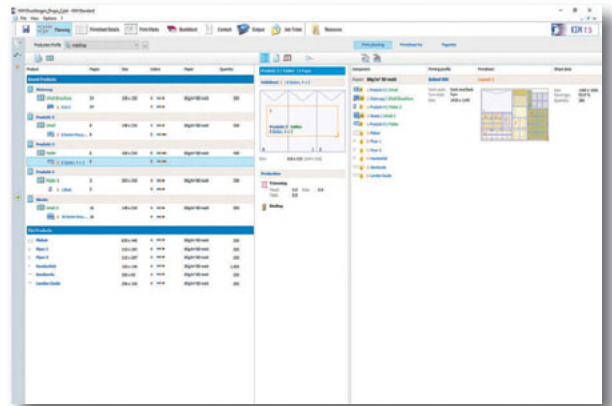
Quality builds trust.

Krause Imposition Manager – High-End Imposition for flexible Job Handling

As no other imposition solution, the Krause Imposition Manager (KIM) has established itself through a well considered user interface as a perfect tool inside the prepress area. Automated functions for sheet optimisation are integrated as well as the full support of the JDF (Job Definition Format) technology using job tickets for import and export. The program flow in KIM is almost consistent with the process of conventional sheet assembly and can be automated by means of production profiles. A multifunctional and professional mode of operation is the result for your production planning and control. This implies in an easy and very efficient task management in the digital print form production.

Krause's long-time experience in the field of imposition can be seen in KIM's extensive schemes and fold sheet library, print sheets, press marks and machine parameters. Likewise, the complete job parameters of a print product can be visually traced and changed with drag and drop. The clearly arranged and well structured graphical user interface allows for short turn around times at highest production safety. As job output the Portable Document Format (PDF) can be used as well as the Job Definition Format (JDF) if KIM will be integrated in a workflow system that uses the JDF-Format. KIM provides field-tested respectively custom-tailored functions for the entire format ranges in sheetfed and webfed printing.

Sheet optimisation with PerfectPlan is an automated printsheet optimisation based on KIM logic. By use of the relevant job data PerfectPlan calculates the maximised utilisation of the print sheet area. This is a highly interesting aspect for e.g. label printers as well as for web shops as it offers a further way of process automation. PerfectPlan can easily import the job data contained in a CSV and XML file. PerfectPlan comes as a standard in all KIM versions optimising up to four products. If more than four products within a job are to be calculated and optimised on one sheet the optional PerfectPlan software module is necessary. Sheet optimisation with AUTOsPrint – eg. for on-line printers – is based on special algorithms and will take into consideration economically reasonable job aspects.



Subject to change / Version 2016-05

KRAUSE

Quality builds trust.

Krause-Biagosch GmbH · Paul-Schwarze-Straße 5 · 33649 Bielefeld · Deutschland

Fon: +49 (0) 521 - 45 99 - 01 · Fax +49 (0) 521 - 45 99 - 71 22 · E-Mail: info@krause.de · www.krause.de