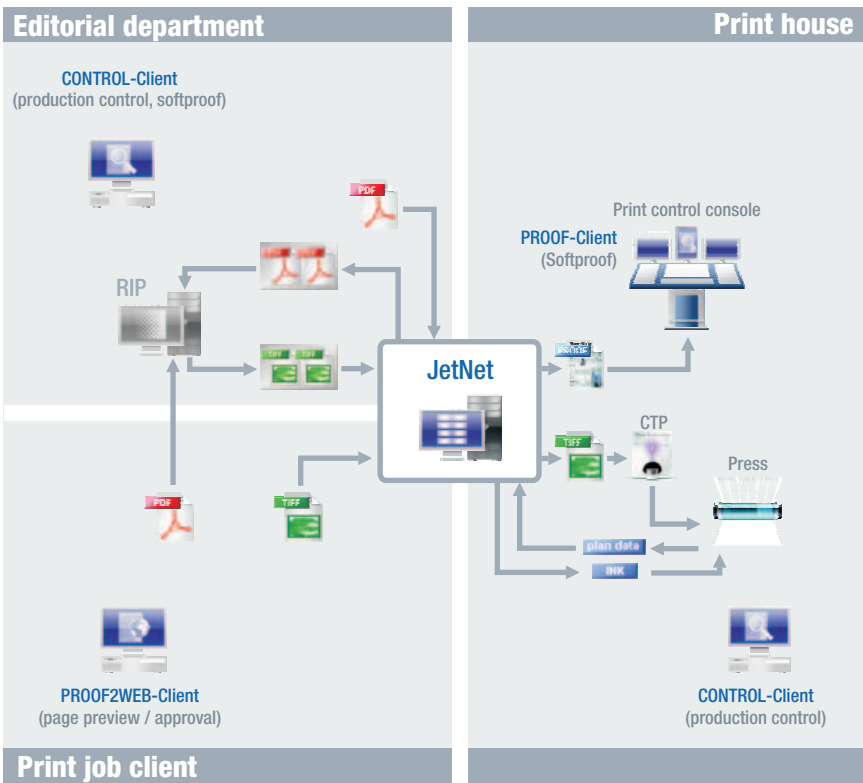


JetNet / Smart'n'Easy Net

Prepress management for newspapers

Use JetNet or Smart'n'Easy Net for managing your prepress production data. Define workflows for PDF and TIFF data. Integrate RIPs and platesetters. Automate the workflows by integrating external planning systems.



JetNet is the solution for managing digital production data in the industrial prepress. The scope of functions covers the entire workflow from PDF receipt to film or plate imaging. The integration of JetNet with peripheral planning systems enables the automation of production processes.

JetNet is available in two versions:	
JetNet	Smart'n'Easy Net
<p>JetNet is the solution for businesses producing more than 200 broadsheet plates per hour or wishing to implement more complex production processes.</p> <p>JetNet offers the following add-ons:</p> <ul style="list-style-type: none"> ■ Ink saving in PDF files ■ colour consistent softproof ■ Colour density value calculation ■ Evaluation and visualisation of information from the punching / bending systems ■ Workflow automation due to the import of planning data from external systems 	<p>Smart'n'Easy Net is the solution for businesses producing up to 200 broadsheet plates per hour.</p> <p>Smart'n'Easy Net offers the following add-ons:</p> <ul style="list-style-type: none"> ■ Colour density value calculation

Advantages:

- Process optimisation due to integration of PDF, TIFF and softproof workflows in one system
- Quality control due to integrated PDF preflight and color consistent softproof of TIFF data
- Cost reduction due to ink saving in PDF files
- Cost reduction due to colour density value calculation
- Time saving due to automatic page pairing of PDF or TIFF data
- Time saving due to workflow automation through import of production planning data from external systems

JetNet / Smart'n'Easy Net

Core functions and options

JetNet and Smart'n'Easy Net offer a comprehensive range of core functions which enable an efficient prepress workflow for PDF and TIFF files. The main difference in the core functions of JetNet and Smart'n'Easy Net is the computing power. Smart'n'Easy Net can produce up to 200 broadsheet images per hour, whereas JetNet produces a virtually unlimited number of images per hour.

Optional add-ons are available for the implementation of more comprehensive production processes and an increased degree of automation. These options are exclusive to JetNet. However, Smart'n'Easy Net can be extended by the INK-Preset option (colour density value calculation).

Core functions		Available in	
PDF-Management		JetNet	Smart'n'Easy
Input / Output	Receipt, saving and outputting of PDF files. Output is possible to all RIPs that provide hot folders. Multiple output is possible.	+	+
PDF-Preview	Integrated function for previewing PDF pages	+	+
PDF-Preflight / PDF-Correct		+	+
PDF-Preflight	Function for checking the RIP ability and printability of PDF files	+	+
PDF-Correct	Function for correcting problems found during preflight	+	+
PDF-Impose		+	+
Sheet assembly	<ul style="list-style-type: none"> Automatic sheet assembly from individual PDF pages on the basis of pair plans (editor for creating the plans is integrated in the workstations) Manual creation of sheets via "drag & drop" possible on all workstations 	+	+
TIFF-Management		+	+
Input / Output / Platefurniture	<ul style="list-style-type: none"> Multiple output and platesetter balancing possible. Output of all separations on one page and subsequent re-output is on the same platesetter. Output sorting possible, depending on the separation colour and copies (e.g. order for dual copies: CMYK, CMYK or CC, MM, YY, KK). Drawing of "platefurniture" into the platesetter image (e.g. bend marks, barcodes, clear text or tapes for covering image areas) 	+	+
TIFF-Preview	<ul style="list-style-type: none"> Display of the page, separation or TIFF file on all workstations Output simulation of the exposure (preview of the hi-res exposure bitmap on all workstations) Layout control (display of the valid status as helplines in the preview window to check whether the page is exactly laid out) 	+	+

Krause-Biagosch GmbH

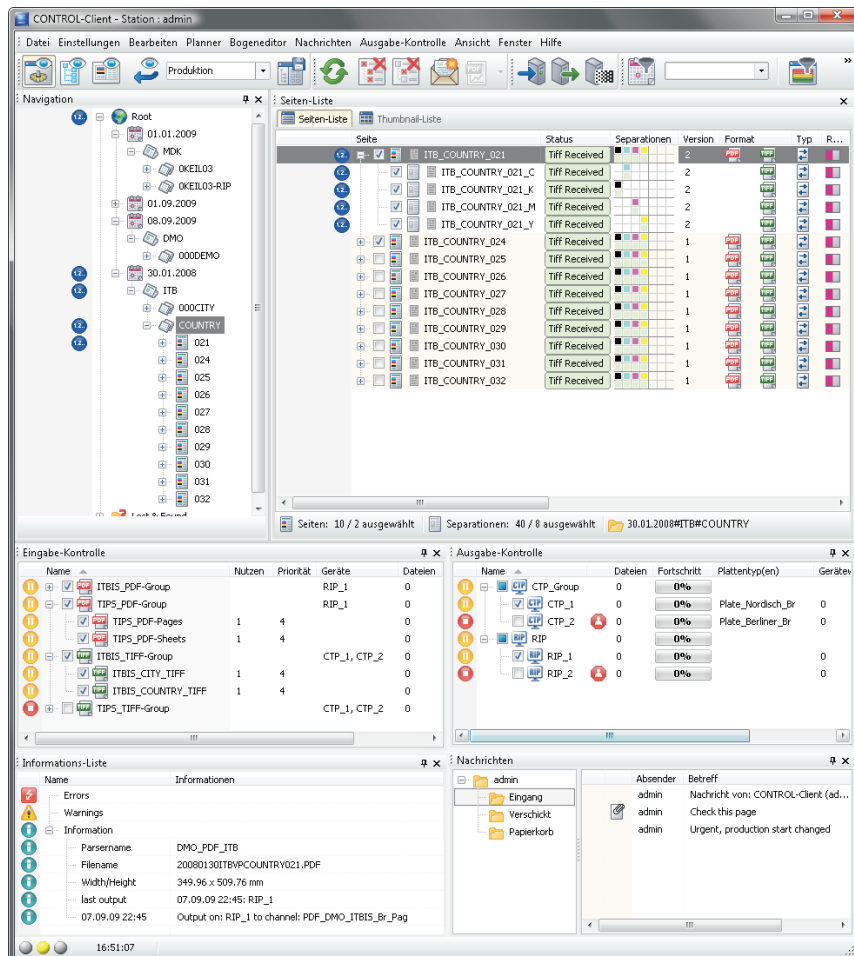
■ Paul-Schwarze-Strasse 5
 33649 Bielefeld
 Germany
 Phone: +49 (0)521 4599-01
 Fax: +49 (0)521 4599-123
 Email: info@krause.de
 Internet: www.krause.de

Optional add-ons		Available for	
PDF-InkAdjust		JetNet	Smart'n'Easy
Ink saving and colour optimisation in PDF files	<ul style="list-style-type: none"> Replaces CMY with black via GCR/UCR. Transformation through the use of DeviceLink profiles Limitation of the overall colour density Adjustment of ISOnewspaper26 data for waterless offset printing Colour space transformation of RGB data to CMYK data 	+	
TRUECOLOR-Proof		+	
Colour consistent softproof	<ul style="list-style-type: none"> Colour consistent display of ripped production data (colour consistent according to the media standard for printing, ISO12647-7) L-Boost technology for higher display brightness White dot adjustment in CMYK print ICC profile for better simulation of the paper colour on the monitor RIP decalibration for linearisation of potential RIP curves from the softproof data (prerequisite for achieving an ISO-compliant display) 	+	
PROOF-TouchClient	Client software for touch panels for convenient operation without keyboard and mouse. Particularly suitable for using the softproof functions of print control consoles	+	
PROOF2WEB		+	
Page preview in web browsers	<ul style="list-style-type: none"> Display of the production data in web browsers. Suitable for connecting remote locations or suppliers to the softproof workflow 	+	
PLATE-Track		+	
Display of the bend status	<ul style="list-style-type: none"> Evaluation and visualisation of information from the punching / bending or sorter systems Supported systems: NELA, Barensee, others upon request 	+	
INK-Preset			
Colour density value calculation	<ul style="list-style-type: none"> Calculation of colour density values from TIFF-G4 or CIP3 files (millimetre ink zones are supported) Conversion of TIFF-G4 files into CIP3 files Supports the following planning systems: <ul style="list-style-type: none"> EAE Print4, manroland Pecom, ABB MPS, Honeywell Printa, others upon request 	+	+
PLAN-Link			
Evaluation of external planning data	<p>Import of planning data from external systems to extend the JetNet functionality. The following functions can be implemented:</p> <ul style="list-style-type: none"> Generation of barcodes on the printing plates for automatic sorting by plate stackers depending on the cylinder positions Marking of the cylinder position as clear text and/or as a diagram for user information Supports the following planning systems: <ul style="list-style-type: none"> EAE Print4, manroland Pecom, ABB MPS, Honeywell Printa, others upon request 	+	
SYSTEM-Automation			
Evaluation of external planning data	<p>Import of planning data from external systems for automation of the production processes:</p> <ul style="list-style-type: none"> Printing tower view in the JetNet client. The view shows the structure of the printing plant consisting of the press, folder, printing tower, printing units and fields. The production data are displayed according to the position of the printing plates on the cylinders Display of planned print productions in the JetNet client. The productions can be activated manually or automatically, according to the planned print start in the press plan Automatic sheet assembly according to the press plan Automatic evaluation of variable web widths from the press plan Evaluation of common page relations for automatic decision whether plates need to be produced Function for manually requesting additional plates from the printing tower view Supports the following planning systems: <ul style="list-style-type: none"> EAE Print4, manroland Pecom, ABB MPS, Honeywell Printa, others upon request 	+	

JetNet / Smart'n'Easy Net

Flexible client architecture

The JetNet CONTROL-Client provides all functions in one central interface. The appearance can be adjusted by the user. The panels can be shown or hidden to create an individual work environment.



System architecture

Supported operating systems

Server components	Windows-Server 2003 r2 (SP2), Windows-Server 2008
Client components	Windows XP Prof. (SP3), Windows Vista Business (SP2), Windows 7

Network

Type	TCP/IP over Ethernet (others upon request)
Bandwidth	min. 100 MBit/second

Virtualisation

VMware	Operation in VMware environments is possible
--------	--

Failover cluster

MS cluster	Operation in a Windows Server Enterprise cluster is possible
------------	--

Krause-Biagosch GmbH

Paul-Schwarze-Strasse 5
 33649 Bielefeld
 Germany
 Phone: +49 (0)521 4599-01
 Fax: +49 (0)521 4599-123
 Email: info@krause.de
 Internet: www.krause.de