

Krause Fit for the Future Retrofit your CTP

CTP Upgrades for installed CTP Lines

- 1. Workflow & RIP**
- 2. Krause NetLink & Electronics**
- 3. Krause CTP Controller**
- 4. Krause CTP Retrofit (Optics..)**
- 5. Krause PowerLoader**
- 6. Krause Processor**

Be Fit for the Future with our latest Upgrades and Retrofits !!

Reasons for upgrades and retrofits:

- Replace outdated or discontinued parts (single point of failure risk)
- Quality improvement by new and modern components
- Modernise PLC control and computer components
- Save operation costs by more automation
- Increase productivity to meet tougher deadlines
- Raise availability of the units
- Enable or improve Remote Services
- Extend the lifetime of your systems and keep the manufacturer support

Krause as your partner wants to help with upgrades and retrofits in order to keep your systems running and achieve a longer life time.

**Krause as your partner offers investment security
by constant innovation and modular designs
since 165 years**

Be Fit for the Future with our latest upgrades !!



Krause JetNet Workflow Version 7.6

- Latest features for the Workflow

JetNet Version 7.6 upgrade

- Older versions are more difficult to support

- Latest PDF files can cause issues in PreFlight

+ New features like new and easy Imposition Planner

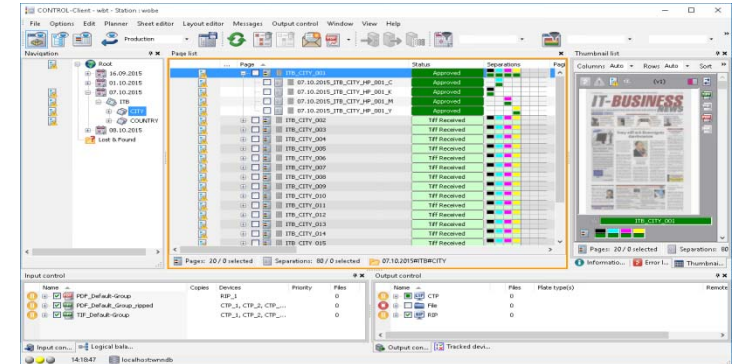
+ More features available with new version – Portal, Press Planner

+ Higher stability and processing speed of the new workflow

+ Higher production safety

Pricing is: Included with Gold Support or ask Krause for new features

Installation takes: 3-5 Days



Krause OEM RIP Navigator

- Navigator V 12.x modern RIP

RIP Upgrade to Version 12.x

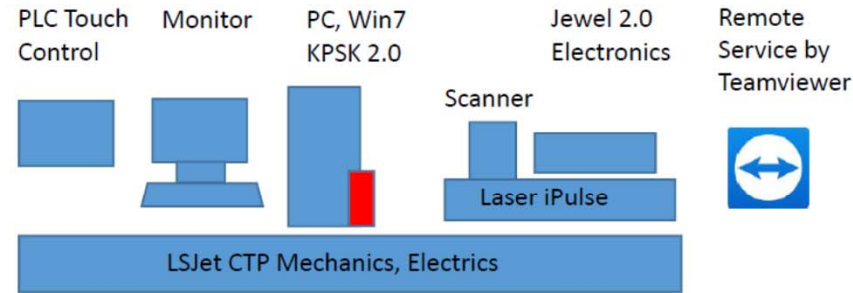
- New PDF Files can cause RIP issues in older version**
- + New SW with higher performance**
- + More comfortable RIP operating**
- + New Screening options for higher quality (if combined with Juwel Ultra)**
- + Higher Production Safety**

Pricing is: **Euro for Navigator SW upgrade**
 Euro for HXM, Euro Sandy 1st, Sandy add. licenses
Installation takes: **½ Day for RIP and approx. 2 days for Sandy Calibration**

NetLink vs. Controller Upgrade - Features & Quality

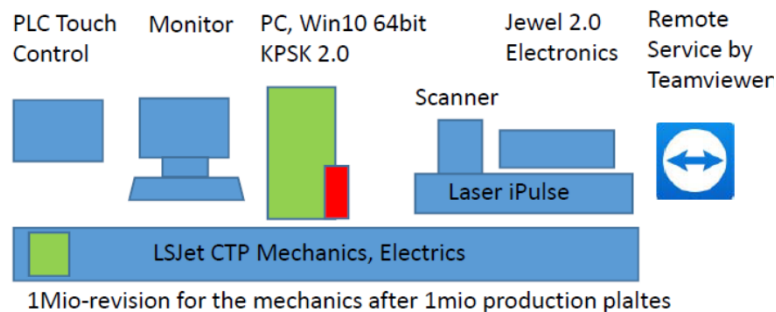
Current configuration of the LSJet with Netlink Windows 7 PC

LS Jet II/III with the major components



Option 1: Windows 10 upgrade

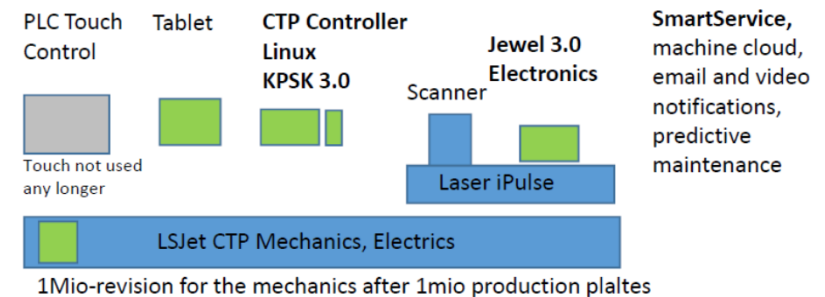
Upgrade the PC and the Netlink Software to **Windows 10** 32 bit or 64 bit (KPSK 2.0 stays discontinued)



Recommended for a few years of production

Option 2: Switch to Linux

CTP Controller with Webserver replaces Netlink PC
State of the art digital electronics, KPSK 3.0, tablet operation, link the machine to the Krause Service Cloud



Recommended for longer production life and modernized services

Krause NetLink 1 Bit Tiff Interface

- Windows 7 upgrades

NetLink Windows 7 upgrade

- No more Windows XP support and aging HW
- + New PC, Windows 7 OS, NetLink, Tiff-Blaster SW
- + Pre configured PC with Plug&Play installation
- + 3 years Dell warranty on PC HW
- + Higher production safety

Pricing is: Euro for PC and SW
Euro for PC and SW plus new KPSK Board

Installation takes: ½ Day and during a Preventative Maintenance is f.o.c.



Now you should focus on WIN 10 or CTP Controller with Linux

Krause NetLink 1 Bit Tiff Interface

- Windows 10 upgrades 64 Bit

NetLink Windows 10 upgrade

- No more Windows XP (7) support and aging HW

+ New PC, Windows 10 OS, NetLink, Tiff-Blaster SW

+ Pre configured PC with Plug&Play installation

+ 3 years Dell NBD warranty on PC HW

+ Higher production safety

Pricing is: Euro for PC and SW

Euro for PC and SW plus new KPSK Board

Installation takes: ½ Day and during a Preventative Maintenance is f.o.c.



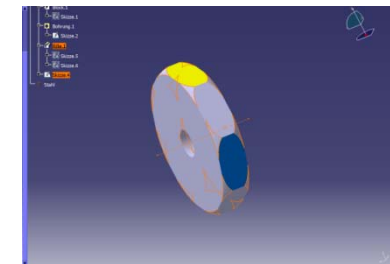
Krause Juwel Ultra Electronics (2.0)

- Quality Upgrade for higher Screenings



Juwel Ultra Electronics upgrade for NetLink with WIN 7/10

- = New electronic box with SW and boards for focus, lenses, piezo
- + Higher Screenings 150lpi ++ Hybrid or FM Screening
- + Automatic Cross Scan alignment based on measured values
- + Continuous and stable imaging quality by optical self adjustment
- + Higher production safety and less maintenance



Pricing is: Euro for the Juwel Ultra Electronic Box and SW Updates
Installation takes: 1 Day and during a Preventative Maintenance is f.o.c.

KRAUSE

Quality builds trust.

Krause CTP Controller Upgrade - Go Digital

Smart Man. Reports

Camera Support

Remote Messaging

Krause SmartService

Summary

Plates	Errors	Defect rate
3187	10	0.13%
4055	10	0.00%
4852	10	0.08%
2408	10	0.21%
5833	10	0.08%
117	10	0.08%

Industry 4.0 Retrofit

- CTP Controller Linux
- KPSK 3.0 Board
- Juwel 3.0 Electronic

Krause CTP Controller & new Electronics

- OS, Smart Service and Quality Upgrade

CTP Controller 3.0 Upgrade with Tablet Control and Smart Service

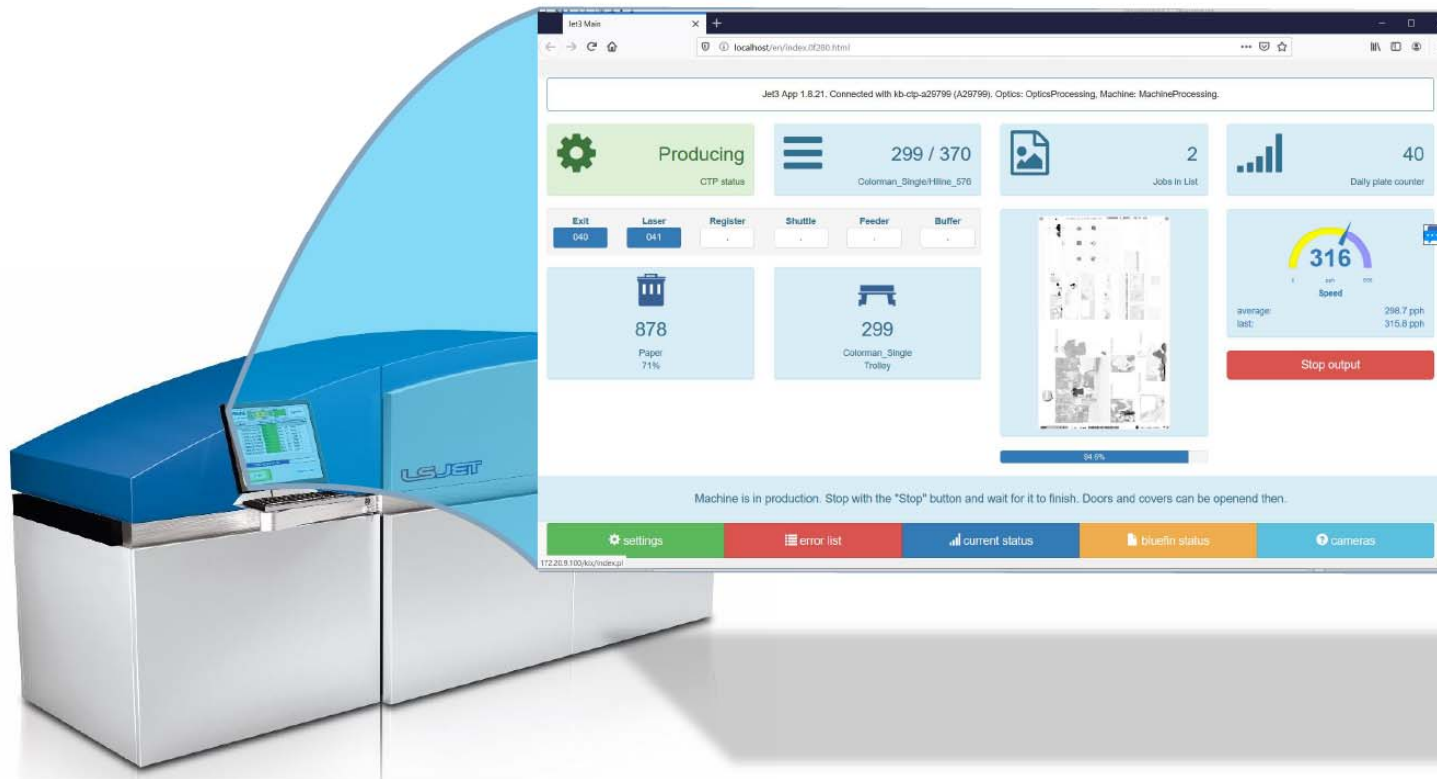
- = New CTP Controller (Linux OS replacing NetLink WIN)
- = New CTP Electronics 3.0 box with SW and boards for optics
- = New Smart Service and Remote Messaging system
- + Enter the Smart Service World and get connected to Krause
- + Continuous and stable imaging quality with automatic adjustments (cross & in scan)
- + Higher production safety with Remote Support and less maintenance

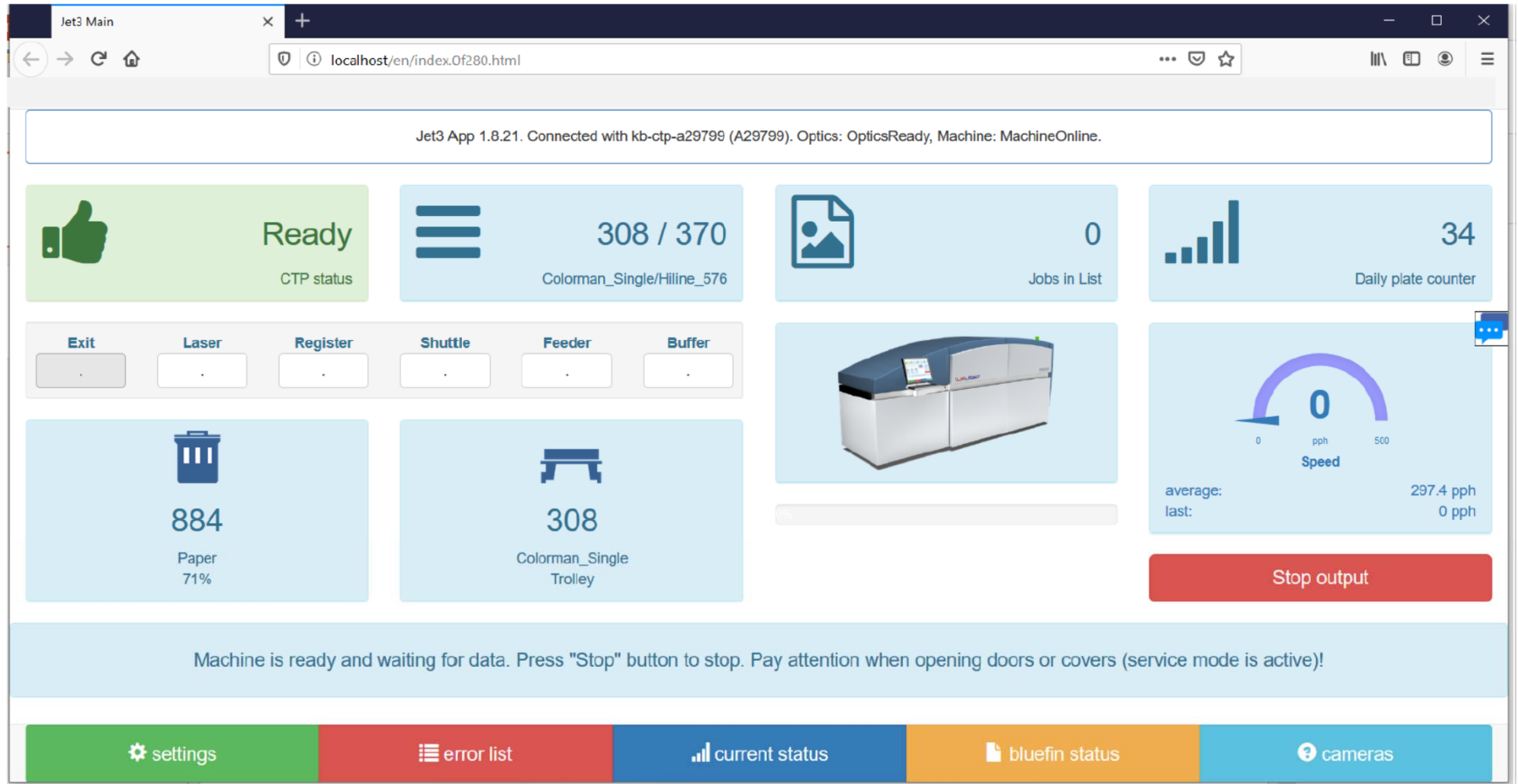
Pricing is: Euro for the CTP Controller and Juwel Ultra 3.0 Electronic Box
Installation takes: 2 Days and during a Preventative Maintenance is f.o.c.

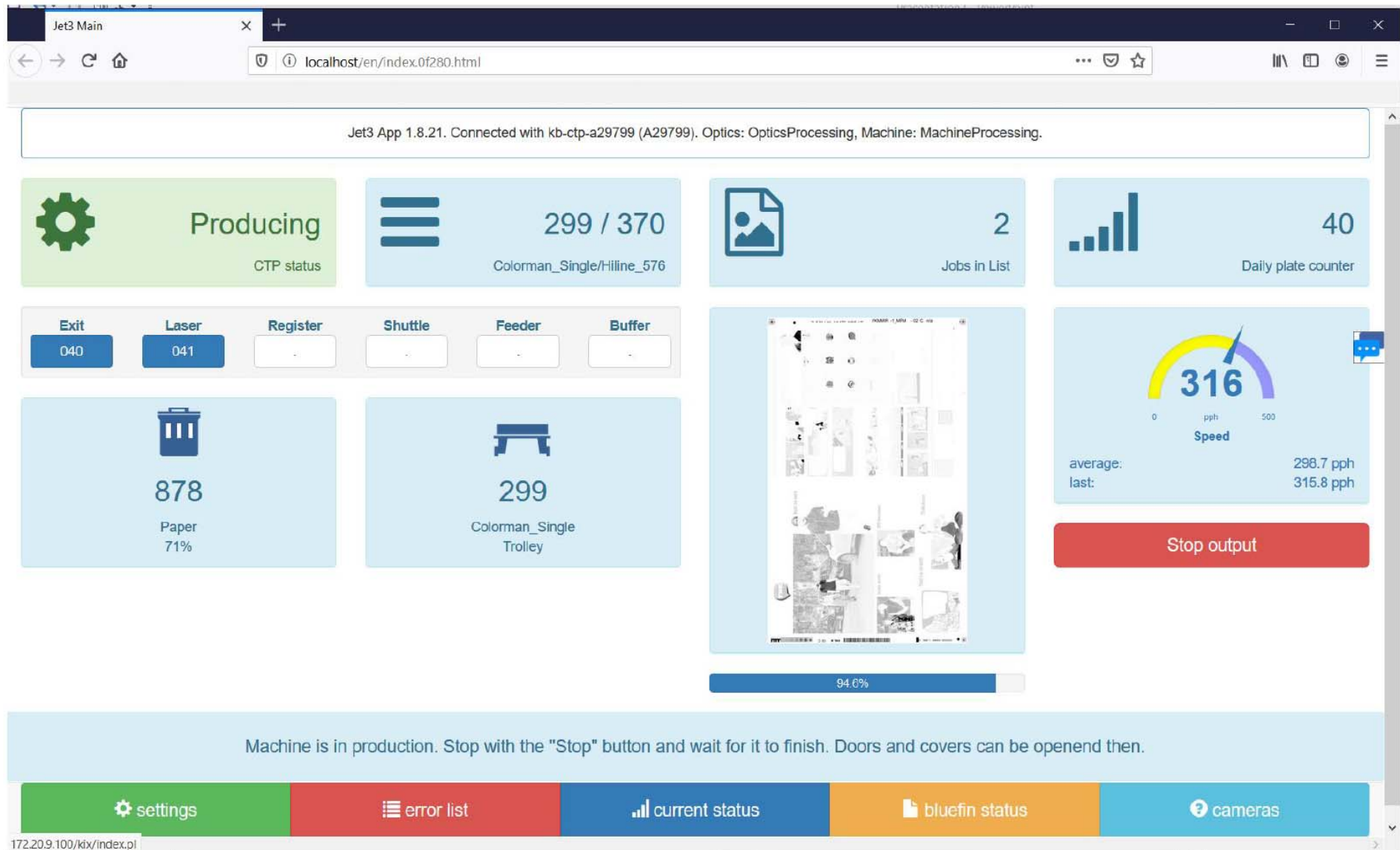


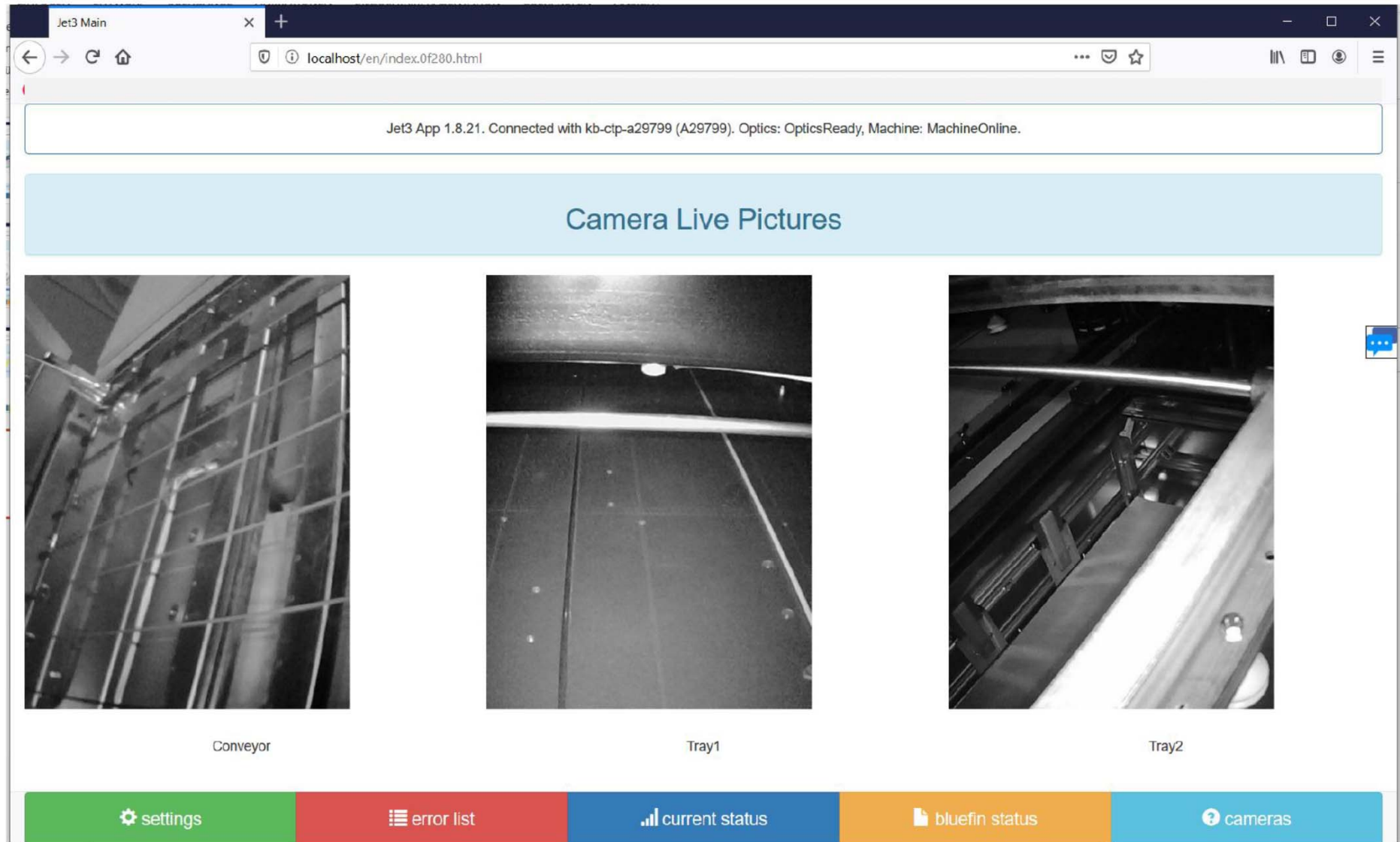
CTP Controller and 3.0 upgrades for the LSJET

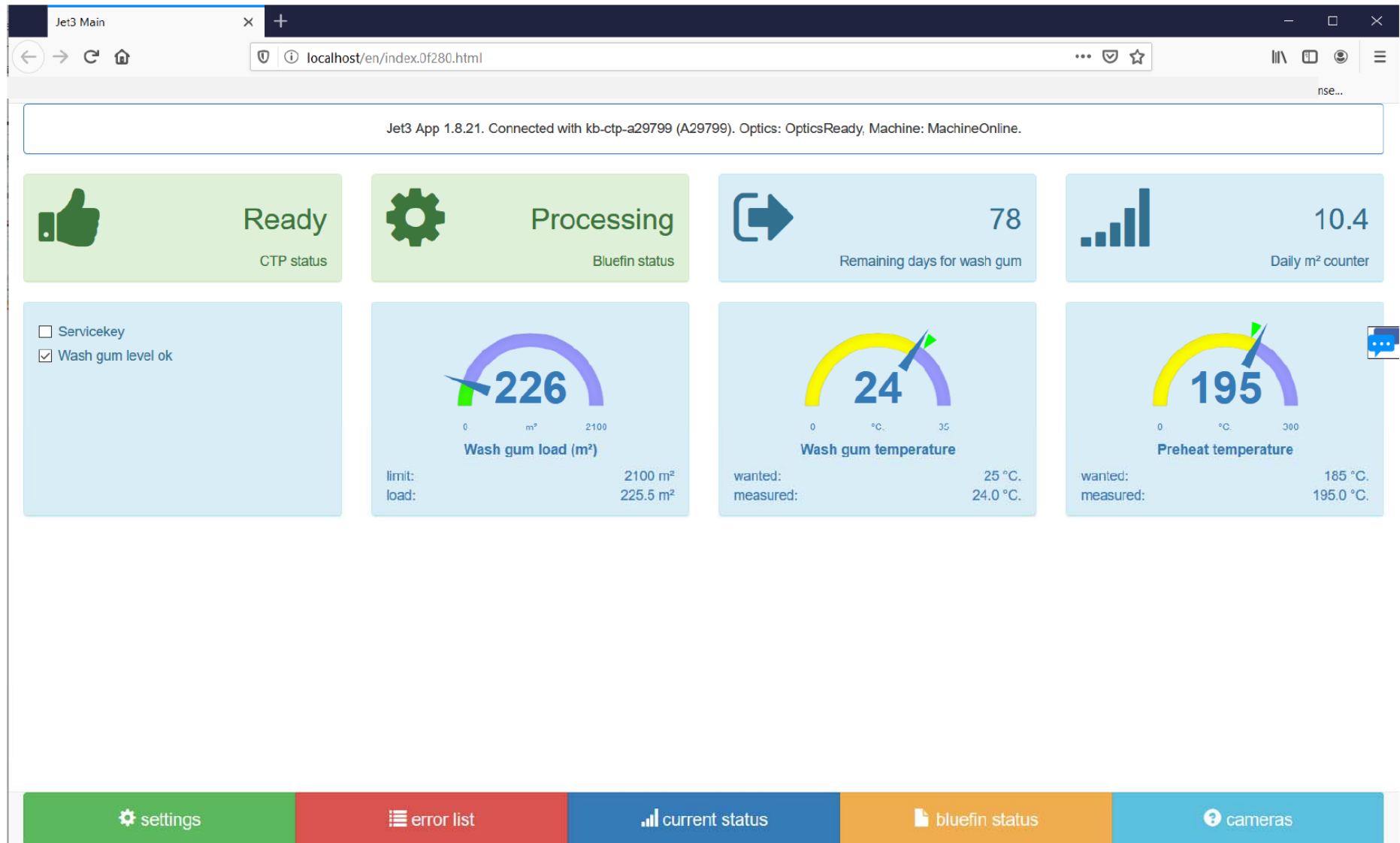
System overview and Screenshots











Jet3 Main

localhost/en/index.0f280.html

Jet3 App 1.8.21. Connected with kb-ctp-a29799 (A29799). Optics: OpticsReady, Machine: MachineOnline.

Errors

no errors

History

Filter: ☒ Errors ☒ Warnings ☐ Information ☐ Others

Today, Mittwoch, 17. Juni

21:44 26s

542

Preheat 3 temperature low

21:44 26s

509

Preheat 1 temperature low

21:39 4m 17s

143

Processor not ready

21:39 14s

542

Preheat 3 temperature low

21:39 14s

511

Preheat 2 temperature low

21:39 14s

509

Preheat 1 temperature low

21:39 8s

151

Emergency Stop

21:39 8s

143

Processor not ready

21:39 3s

542

Preheat 3 temperature low

21:39 3s

511

Preheat 2 temperature low

21:39 3s

509

Preheat 1 temperature low

21:39 3s

501

Emergency stop (Bluefin)

Load more history

settings

error list

current status

bluefin status

cameras

Summary

Machine	No	Plates			Errors		Error rates	
		Total	30 days	7 days	30 days	7 days	30 days	7 days
CTP 1	A29702	236702	13704	3187	13	4	0,09%	0,13%
CTP 2	A29673	239341	17197	4058	19	4	0,11%	0,00%
CTP 3	A29675	277982	20240	4852	37	0	0,18%	
CTP 4	A29622	201240	8937	2408	7	2	0,08%	0,08%
CTP 5	A29618	209851	11631	2873	26	6	0,22%	0,21%
total		1165116	71709	17378	102	16	0,14%	0,09%

Total Mean Plate Count between Failures

1086

Interpretation

The first target of improvements is reached: 1000 plates without errors in average.

The plate jam message with 9 occasions out of 16 is still the top scorer.

Krause will split the plate jam messages in two events:

1. Real plate jam with plates crunched in the machine: machine has to be stopped.
2. Pseudo plate jam with plates not taken away after the Bluefin. Maschine can continue and bring all plates out before stopping.

PlateStream CTP 2

Zellen sind verknüpft	Total	Last 30 Days	Last 7 Days
Plate counter	239341	17197	4058
Errors		19	4
Error rate		0,11%	0,00%

Errors high score last 7 days: (per Hand aus Oskar kopieren)

Error	Count
Plate jam	2
Can't open image file	2

Krause NetLink and CTP Controller Upgrades

Upgrade Package	Software	PC Hardware	KPSK Board	Optics Electronic	Optics Control	Machine Control	Camera Support	Smart Service	Remote Messaging	Remote Service	Smart Reports
WIN 10 Upgrade	NetLink Tiffblaster	Dell PC WIN 10 OS				B&R Panel	Yes, optional				
WIN 10 + KPSK Upgr.	NetLink Tiffblaster	Dell PC WIN 10 OS	KPSK Version 1			B&R Panel	Yes, optional				
WIN 10 + KPSK + J-Ultra 2.0	NetLink Tiffblaster	Dell PC WIN 10 OS	KPSK Version 1	Juwel Ultra 2.0	Auto Correction	B&R Panel	Yes, optional				
CTP Controller	CTP Controller	Embedded Linux	KPSK Version 3	Juwel Ultra 3.0	Auto Correction	Tablett + B&R	Yes, optional	YES	Yes	Yes	Yes, optional

Planned CTP Lifetime
2-3 Years

Lifetime Expectation
> 5 Years

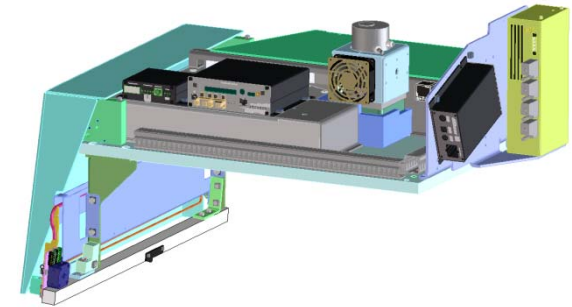
SmartServices
Industry 4.0

From 2020 onwards Krause will supply all CTP platesetters with the new CTP Controller including Tablet and Juwel Ultra 3.0 Electronics (no more WIN PC's inside new CTP)

<u>CTP Components</u>	<u>B&R with NetLink</u>	<u>CTP Controller with B&R</u>
Data Interface	NetLink SW	CTP Controller
Data Output	Tiff Blaster SW	CTP Controller
Operating System	Windows XP, 7, 10	Linux
Operating Hardware	Dell PC	Embedded Industrial PC
Output to Optics	KPSK Board	Ne KPSK
Electronics for Optics	Juwel, Juwel Ultra 2.0	Juwel Ultra 3.0
User Interface Data	PC Monitor	Samsung Tablet
User Interface Machine	B&R Panel	Samsung Tablet
Machine Control	B&R	B&R
Mobile Control	no	Mobile APP
Multi Machine Control	LS Jet II – no	LS Jet II – No
	LS Performance incl. BF /BFLC	LS Perf. Incl. BF / BF LC
Smart Services		
Industry 4.0 Database	no	Yes for CTP
Krause Machine Cloud	no	Yes for CTP
Remote Connection	no	Yes for CTP & Processor
Remote Messaging	no, only by operator	Yes for CTP
Camera Support	no	Yes for CTP
Smart Management Reports	no	Yes for CTP & Processor

Krause CTP Retrofit with new Optics

- CTP Retrofit at Krause or on-site



Krause CTP Retrofit with new Optics, Electronics, Speed, etc.

- = Complete new Optics with Electronics plus possible Speed Upgrade**
- + All major items will be exchanged (Laser, Polygon, Boards, Lenses, etc.)**
- + Small wear and tear items will be exchanged as well when shipped back to Krause**
- + Speed Upgrades can be agreed in this package as well**
- + Optical and electronical system allow for higher screenigns and perfect quality**

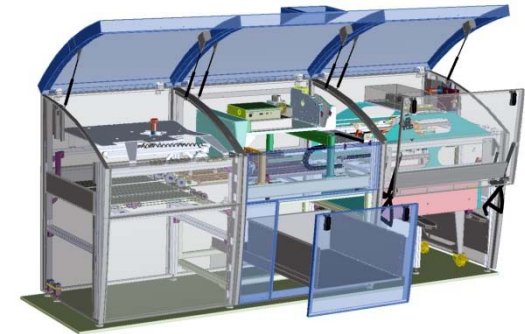
Pricing is: Euro for new components and upgrades

Installation takes: 1-2 Days

Krause CTP Factory Retrofit

- CTP Factory Retrofit at Krause

Krause complete CTP Retrofit with new Optics, W&T, etc.



= Complete Factory Retrofit with new Optics, Electronics, Wiring, Wear & Tear Parts, ..

+ All major items will be exchanged (PC, Optics, Electronics, Wiring, Boards, Belts, ..)

+ All wear and tear items will be exchanged as well when shipped back to Krause

+ Speed upgrades, new PLC Control, new valve terminal, linear direct drive system, Trolley repair kits etc. can be agreed in this package as well

+ It is like a new machine and represents best option if re-invest is not planned

Pricing is: Euro for new components and upgrades

Installation takes: 5 Days

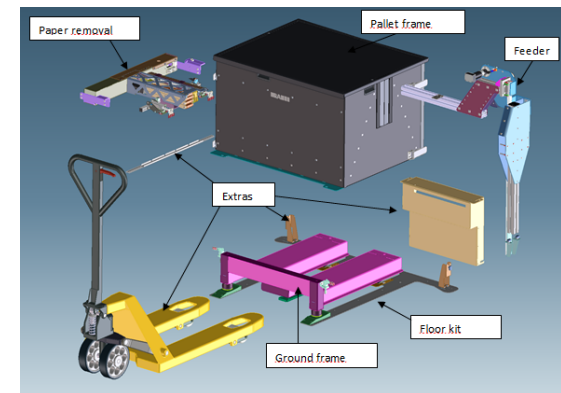
Krause PowerLoader Retrofit

- Automation and plate capacity

Krause PowerLoader Retrofit

- Economic pressure requires more automation
- + Increase the plate capacity from 600 to 3.000 plates
- + Trolleys and pallets can be used in production
- + Loading of plates on pallets in CTP directly
- + Eliminate human errors in plate loading process
- + Reduce waste (plate packing) and save preparation time
- + No lifting of plates needed = no back pain for the CTP operators

Pricing is: Euro for the Krause Power Loader Retrofit
Installation takes: 3-4 Days



Krause PowerLoader Upgrade

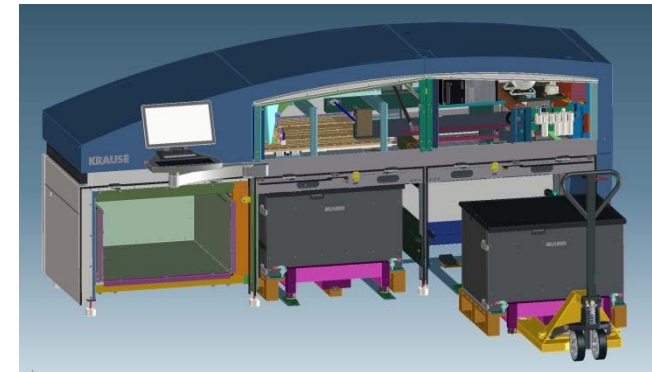
- Automation and plate capacity

Krause PowerLoader Upgrade

- Economic pressure requires more automation
- + Trolleys and pallets can be used in production
- + Increase the plate capacity from 1.000 to 3.000 plates per bay
- + Loading of plates on pallets in CTP directly
- + Eliminate human errors in plate loading process
- + Reduce waste (plate packing) and save preparation time
- + No lifting of plates needed = no back pain for the CTP operators

Pricing is: Euro for the Krause Power Loader Upgrade 1st Bay
 Euro for the Krause Power Loader Upgrade 2nd Bay (only MF)

Installation takes: 1-2 Days



Krause BlueFin LowChem Kit

- Optimised processing of LC or CF

BlueFin LowChem Kit upgrade

- Plate suppliers focus more and more on LC or CF plates
- + SW and HW with precise pumps for optimised circulation
- + Exact levelling of the cleaning gum in large BlueFin bath
- + Integration of external canister in cycle with level control
- + Higher production safety and easy upgrade to new plate technology



Pricing is: Euro for SW and HW upgrades
Installation takes: 1 Day

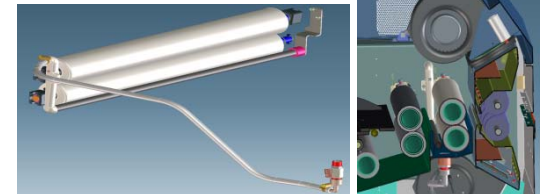
Krause BlueFin LC Clean-Process Kit

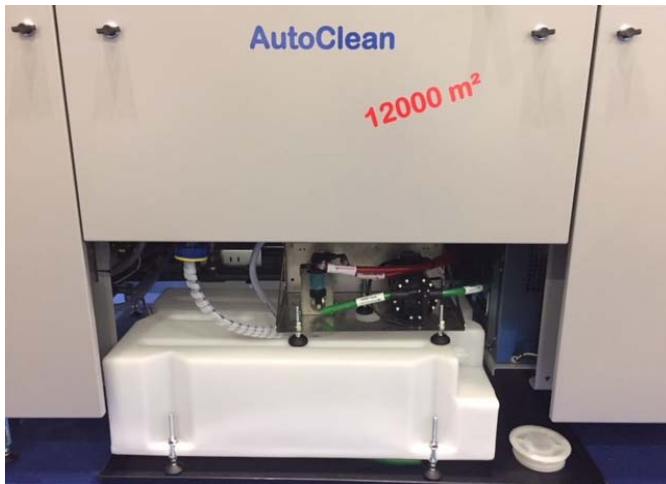
- Cleaning of LC plates before exit

BlueFin LowChem Clean-Process upgrade (before 07/2015)

- LowChem process uses gum solution on back and front
- + New Molton rollers and water spray bar after gumming
- + Very clean plates even with older gum solution
- + No pollution of conveyors, punch benders, sortation and presses with dirty gum
- + Crisp and clean image on plates for better measuring and faster press start up
- + Higher production safety and longer usage of gum solution

Pricing is: Euro for rollers, pump, spray bar and connection
Installation takes: ½ Day and during a Preventative Maintenance is f.o.c.





**12.000m² Automatic
Retrofittable
BlueFin or BlueFin LowChem**

BlueFin AutoClean Functionality


- Automatically recognize the cleaning time
 - Autodrain of washgum (waste tank)
 - Autorinse with water
 - Autofill with cleaning agent (wash tank)
 - Autorun of cleaning program (heat, circulate, wait)
 - Autosave the cleaning agent
 - Autorinse with water
 - Autofill of washgum out of supply tank
 - Auto-Topup of washgum out of supply tank
- >> 12.000m² without manual interference !!**

Pricing is: Euro for AutoClean Kit, without in-house wiring and pipe work
Installation takes: 3-4 Days

More information at : www.krause.de



Kontaktbox
Krause-Biagiosch GmbH
Paul-Schwarze-Straße 5
33649 Bielefeld
Fon: +49 521 4599 01
Fax: +49 521 4599 7123
Email: info@krause.de
→ Anfahrt

 **Bestellhotline**
0800 - 459 92 80

Kundenlogin

→ login

 **Krause Repro**
→ Fachhandel der
grafischen Industrie

→ Ein Unternehmen der
HORSTMANN GROUP



Home



Krause Commercial CTP Line

No touch from pallet to sorter!

Unter diesem Motto haben wir die neue Krause Commercial CTP Line auf der diesjährigen drupa in Düsseldorf vorgestellt. Sie bietet einen Zugriff auf bis zu 1.400 Druckplatten in bis zu 3 Formaten und eine Ausgabe von ca. 300 Druckplatten pro Schicht, die inline gestänzt, abgekannt und automatisch sortiert werden. Das alles ohne manuellen Eingriff von der Palette bis zum Sorter!

→ Krause Commercial CTP Line



KIM 7.5

Die neueste Version 7.5 unserer bewährten Ausschließsoftware KIM (Krause-Imposition-Manager) jetzt mit Perfect Plan.

Nutzen Sie die Vorteile von KIM:

- Einfache Bedienung und schnelle Linienarbeit durch intuitive Benutzeroberfläche
- Mehr Effektivität dank ausgeklügelter Funktionen und neuester PDF-Technologie
- Geeignet auch für komplizierteste Ausschnitte
- Integrierbar in alle gängigen Workflows durch offene Schnittstellen und Erweiterungsmodule

→ zur KIM-Homepage



Krause PlateStream

Der Krause PlateStream basiert auf dem neuesten Stand der Technik für eine zukunftsorientierte und integrierte CTP-Produktion; mit einer Leistung von mehr als 400 Platten/Std., Bedienung und Beladung von der linken oder rechten Seite per Trolley oder direkt von der Palette.

→ Krause PlateStream